



CYGNUS UNDERWATER ULTRASONIC THICKNESS GAUGE



The Cygnus Underwater is the original diver-held subsea Multiple-Echo ultrasonic thickness gauge. It was designed for use by divers undertaking subsea maintenance and surveys 3 decades ago... and today it is still an industry standard.

IDEAL FOR
USE IN



HULL UTM
INSPECTION



CIVIL
ENGINEERING



MARINE
STRUCTURES



OFFSHORE
PLATFORMS

...underwater structures, e.g. bridges, tanks, canal locks, subsea pipelines and equipment, UWILD or IWS class surveys.



CYGNUS UNDERWATER KEY FEATURES



- Multiple-Echo mode for accurate, through-coat measurements as specified by Classification Societies
- Deep Coat mode ignores coatings up to 20mm/0.79in. thick (upon request)
- Heavy duty sealed unit with double 'O' ring protection
- Rugged, durable, shock-proof construction
- Easy & stable calibration - no zero adjustment
- Echo strength indicator to aid measurement
- Two rechargeable battery packs with charger
- Auto-Probe Recognition (APR)
- Topside Repeater options:
 - Option A - Palm-held Topside Repeater (TSR)
 - Option B - CygLink software (Windows based) for data logging and remote display



BRIGHT LED DISPLAY FOR POOR VISIBILITY



DEPTH RATED TO 300M / 984FT



CYGLINK SOFTWARE OPTION



TOPSIDE REPEATER OPTION



BENEFITS OF MULTIPLE-ECHO

- Measures remaining metal thickness on corroded and coated structures
- All measurements are error checked using 3 return echoes to give repeatable, reliable results
- Accepted by all major classification societies
- Greatly reduces inspection time and costs
- Echo strength indicator to aid measurement.

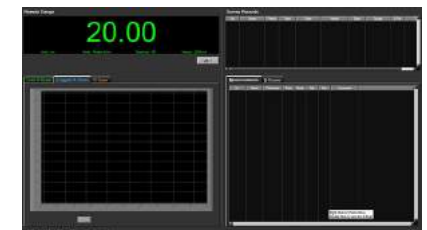
OPTIONS AND ACCESSORIES

Topside Repeater Remote Display Unit

The Cygnus Topside Repeater is a remote display unit connected to the gauge with an umbilical cable. It displays the thickness measurements at the surface in real-time during the survey.

CygLink Computer Software

CygLink is a Windows® based application used to display, log and transfer thickness measurements at the surface. The software can generate PDF reports and export to CSV files, allowing for after-the-event analysis of logged measurements. Designed for Windows 7 and above.



GO TO PRODUCT PAGE

CYGNUS UNDERWATER SPECIFICATION

Feature	Description
Materials	Velocities between 2000 m/s and 7000 m/s (0.0800 in/us to 0.2780 in/us) - covers virtually all common engineering materials
Measurement Range in Steel	1mm - 250mm (0.040" - 10.000") depending on selected probe and configuration, material and temperature
Accuracy	±0.1 mm or 0.1% of thickness measurement, whichever is greatest, when calibrated in accordance with Cygnus Instruments calibration procedure
Resolution	0.1 mm or 0.05 mm (selectable) (0.005" or 0.002")
Probe Options	Single crystal probes
Power	2 x rechargeable NiMH battery packs
Battery Life	2 x 20 hours continuous measuring (with fully charged battery packs)
Display	Large, bright LED display
Size	238mm long x 85mm diameter (9.4in x 3.4in) Including battery pack and probe head
Weight	977g (35 oz) Including batteries
Operating Temp.	-10°C to +50°C (14°F to 122°F)
Environmental Protection	IP68 continuous 300m (984 ft) rating
Standards	Designed for EN 15317
Compliance	CE, UKCA, RoHS



Cygnus Instruments Ltd.
Cygnus House
30 Prince of Wales Road
Dorchester
Dorset DT1 1PW
United Kingdom



ISS6 03/21

Cygnus Headquarters

Call +44 (0) 1305 265 533
Email sales@cygnus-instruments.com
Visit cygnus-instruments.com

Cygnus UAE

Call +971 50 3459305
Email ribu@cygnus-instruments.com
Visit cygnus-instruments.com

Cygnus USA

Call +1 (410) 267 9771
Email sales@cygnusinstruments.com
Visit cygnus-instruments.com/us/

Cygnus Singapore

Call +65 6252 5909
Email sales@cygnus-instruments.sg
Visit cygnus-instruments.com/sg/